

Loreto Nedlands
Y4 (2017)
ICT Parent Information Session

Loreto Nedlands
BYODD Specifications List
2017

Windows device (tablet/laptop)

Operating System	Windows 8 (64 bit, not RT ie Windows Surface Pro 3 or higher)
Screen Size	13-15"
Battery Life	Minimum of 6 hours
Memory	4GB (or more)
Processor Type	Intel Core i3 or equivalent AMD A6 or equivalent
CPU Speed	1.6Ghz or higher
Storage	128GB SSD/HDD or higher
Software	Google Apps for Education-Essential MS Office- optional
Wireless	* Please refer to class Apps/Software List Connectivity 802.11bgn or higher (2.4Ghz and/or 5Ghz)

Mac devices (Macbook Air, Macbook Pro)

Operating System	Mac OSX (MacBook Air or MacBook Pro)
Screen Size	Size 13" to 15.00"
Battery Life	Minimum of 6 hours
Memory	4GB or more
Processor Type	Processor Type Intel Core i5 or higher
CPU Speed	1.6Ghz or higher
Storage	128GB SSD/HDD or higher
Software	MS Office for Mac and access to use GAFE Apps * Please refer to class Apps/Software List Google Apps for Education-Essential MS Office- optional
Wireless	Connectivity 802.11bgn or higher (2.4Ghz and/or 5Ghz)

Apple iPad

Operating System	iOS 9 or higher
Model	iPad Air or higher (not Mini)
Battery Life	Minimum of 6 hours
Storage	32GB or higher
Software	Parents must have a iTunes account for their Child (recommended not to have account attached to a credit card) Safari, Google Apps for Education-Essential * Please refer to class Apps/Software List
Wireless	Connectivity 802.11bgn or higher (2.4Ghz and/or 5Ghz)
Keyboard	http://store.apple.com/au/ipad/ipad-accessories/keyboards or any apple accessory supplier eg. JB Hifi, Office Works, Harvey Norman
Protective Cases (recommended)	http://www.apple.com/au/ipad/accessories/ http://www.casebuddy.com.au/ http://www.officeworks.com.au https://www.jbhifi.com.au/Search/results/?keywords=ipad%20cases

Additional Information

- Protective Covers
- Keyboard
- Insurance-*Parents are advised to check their insurance policy for their student devices. It is also advised to check the manufacturer's warranty.*
- Charging of devices will not be permitted at school

Parent information

- Parents will receive a letter indicating apps/software that are required for commencement of the school year.
- Parents are responsible to install and maintain these apps.
- Teachers may require additional apps/software throughout the school year to complement learning activities.
- Parents are responsible to maintain students devices eg. Username/Apple id accounts, passwords and passcodes.
- Devices will not be permitted to be used at school until student ICT acceptable use policy has been signed and returned to the class teacher

Just remember...

- Both devices are extremely useful tools...it depends on the learning activity
- Strongly recommend to purchase a device that will complement your child's High School ICT Program
- Any device will work with GAFE
- "You get what you pay for..."

GAFE

Information for Parents

21st Century Learning



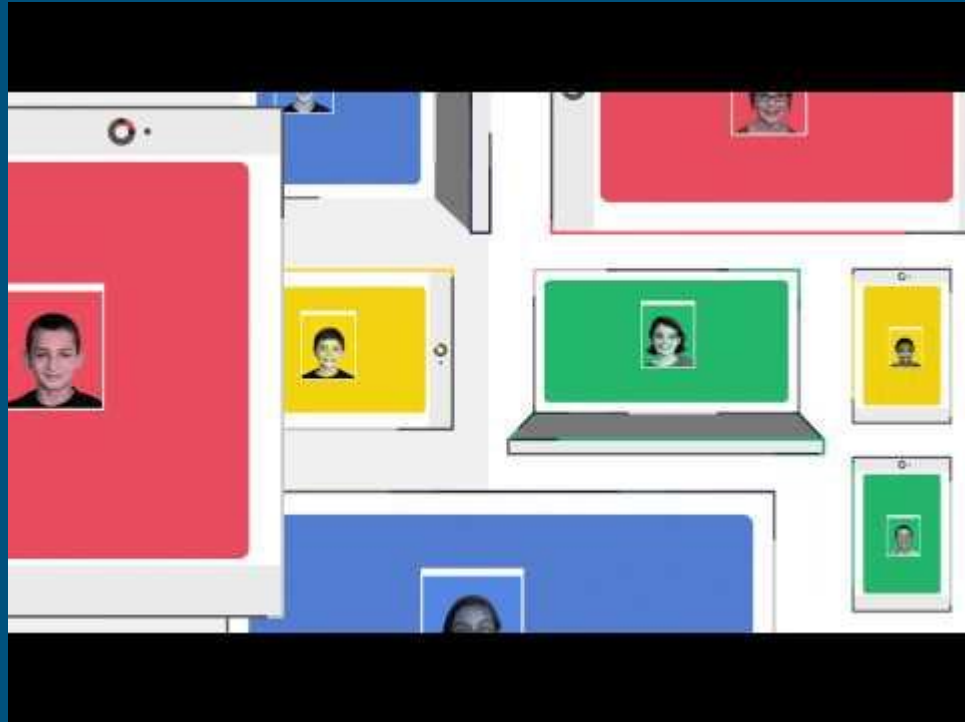
What is GAFFE?

Google

Applications

For

Education



GAFE facts

50 million users of Google Apps for Education

10 million students and teachers are using
Google Classroom

190 Countries

Advantages of using Gafe - IPACA school experience

- student engagement
- “fun and easy to learn”
- “makes people want to come to school”
- easy access to learning
- fusion of technology with traditional learning
- changing students approach to learning
- increased collaboration and communication
- with teachers and with other students
- increases student responsibility
- “makes me feel respected and valued”
- extends learning into home environment
- “happier, more confident and comfortable”



Further Information to consider

Meeting the Australian Curriculum ICT General Capability with GAFE

- <https://sites.google.com/a/cswan.wa.edu.au/gafe-team-space/>

Australian Digital Literacy Standards

- NAP-ICT Surveys 10,000 students yearly
- Results indicate that only 55% students are meeting ICT standards
- <http://www.smh.com.au/national/education/it-crisis-looms-as-computer-literacy-plummets-in-australian-schools-20151112-gkxmzw.html>
- “Just because children are using IT devices more frequently does not mean that they are proficient”. “Skills have to be taught”. ACARA & Council of Aust. Govt. Education Council

Online assessments

- NAPLAN 2017







Helpful hints to manage children's screen time

- Reduce exposure (eg. 2 hours/day excluding homework time)
- No devices in the bedroom
- Media free zones in the house
- Set rules
- Explain restrictions
- Emphasise that technology aids learning
- Parent as role model
- Remove background noise- limit passive viewing-stay focussed
- Monitor use
- Take breaks from the screen-avoid over stimulation
- Stop multitasking-encourage deeper concentration
- Definitely NO device time before going to sleep

GAFE App Requirements

Google Chrome



Google Docs	
Google Sheets	
Google Slides	
Google Classroom	
Google Drive	
QR Reader for iPad	

Loreto Nedlands Digital Technologies Future

- Expect technologies to change
- Most devices have a 3 year life expectancy
- Constantly update your device (both its operating system and apps software)
- Digital technologies have to be embedded into all learning areas of the curriculum

“Embrace technology - We have!”